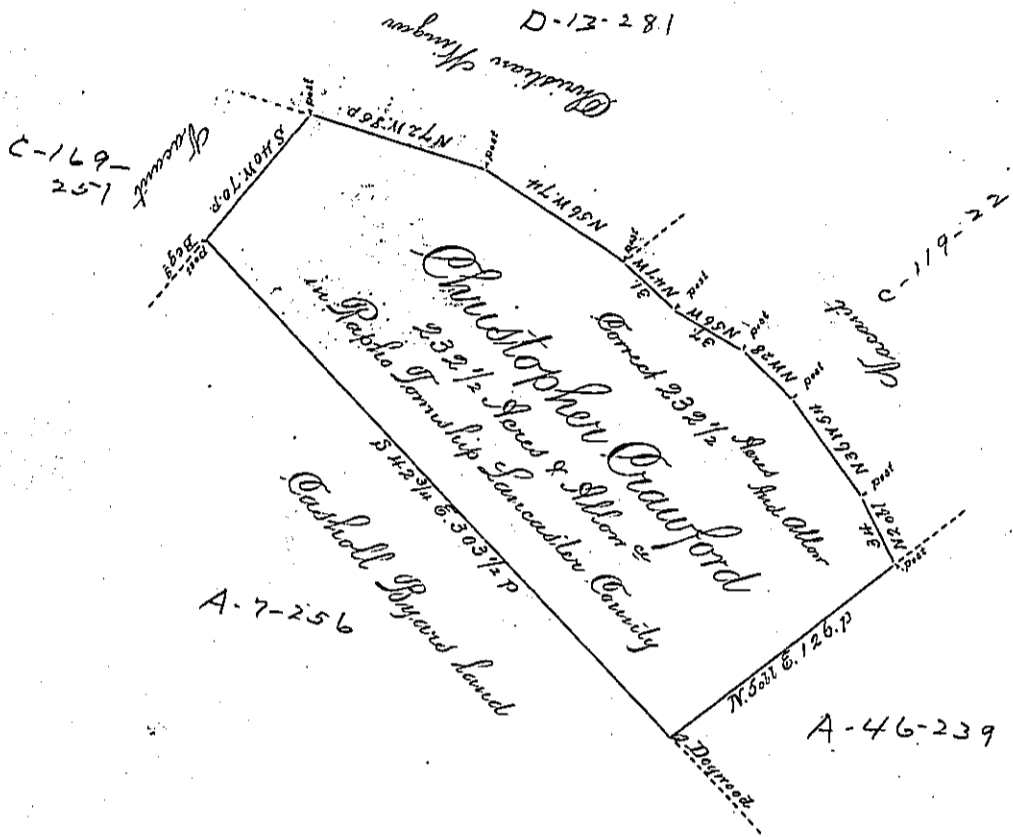


See C-136-11



A Draught of Christopher Crawford's land situated in Rapho Township in the County of Lancaster containing Two Hundred and Thirty Two and a half Acres and the Allowance of six acres p cent for Roads and Highways by Virtue of the Honourable the Proprietaries Warrant Dated the 28th Day of March 1751. Surveyed the 9th Day of April 1751.

p Tho. Cookson D.S.

To Nicholas Seull Esq^r }
 Surveyor General

Quantity Calculated March 21st 1763 }
 & found to contain 232 1/2 Acres & Allowance }
 of six acres p cent

Jos^{ph} Lukens Survey Gen^l

IN TESTIMONY that the above is a copy of the original remaining on file in the Department of Internal Affairs of Pennsylvania, made conformably to an Act of Assembly approved the 16th day of February, 1833, I have hereunto set my Hand and caused the Seal of said Department to be affixed at Harrisburg, this

_____ day of April 1897.

James W. Latta
 Secretary of Internal Affairs.